

1 Insert dowels (8) and mini-fix studs (10) into worksurface (Figures A & B).

Figure A

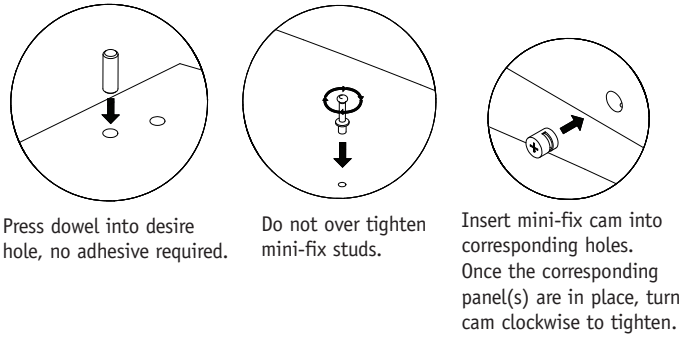
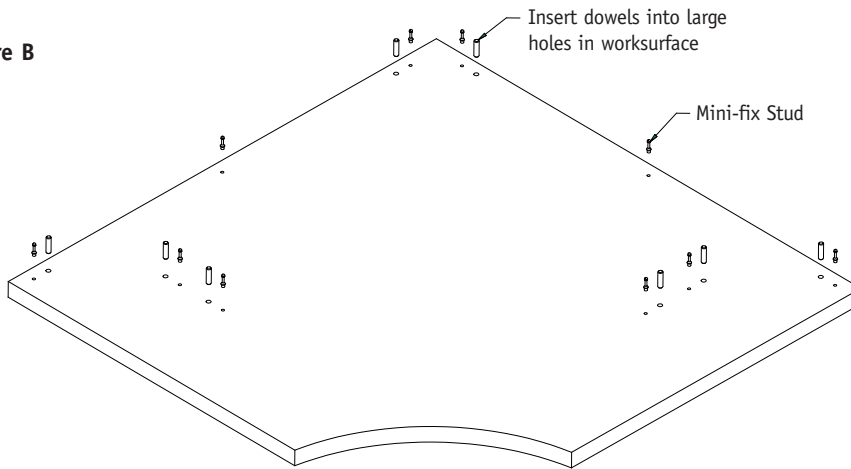
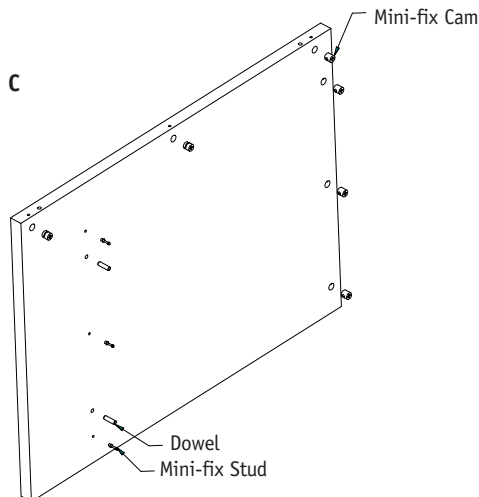


Figure B



2 Insert dowels, mini-fix cams and studs into modesty panels (Figures A & C).

Figure C



Assembly Instructions

Corner Unit

Recommended Tools

- Phillips Screwdriver
- Tape Measure

Package Contents

- 5/16" x 1 3/16" Dowels
- Mini-fix Cams
- Mini-fix Studs

NATIONAL

Furniture with Personality®

Telephone 800.482.1717
 Fax 812.482.8800
www.nationalonline.com

Part #2035580

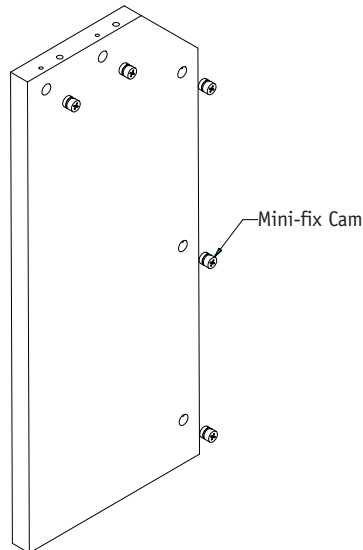
© 2007 Kimball International, Inc.

Proper product installation, in accordance with these instructions, is the responsibility of the installing agent. If you have any questions concerning these instructions, please call National Customer Care Teams.

3

Insert mini-fix cams into support panels (Figure A & D).

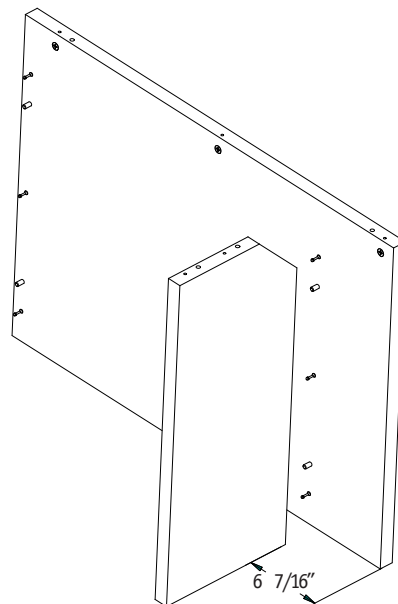
Figure D



4

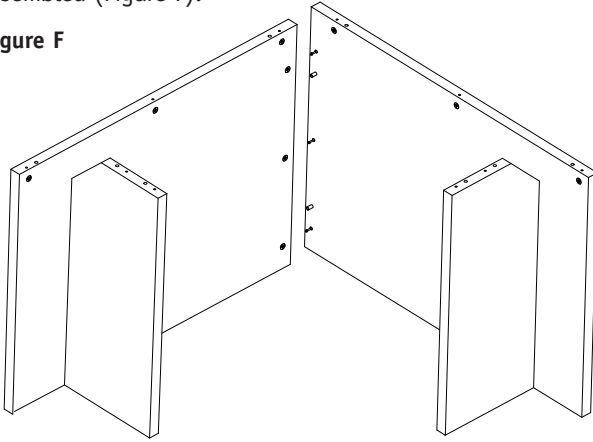
Attach support panels to modesty panels then turn the mini-fix cams clockwise to tighten. The “clean” face of the support panel should be approximately $6 \frac{7}{16}$ ” from the modesty panel’s edge. There should be no gaps between the modesty panel and support panel once assembled (Figure E).

Figure E

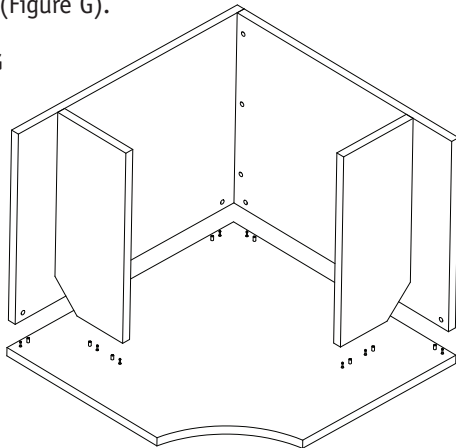


5

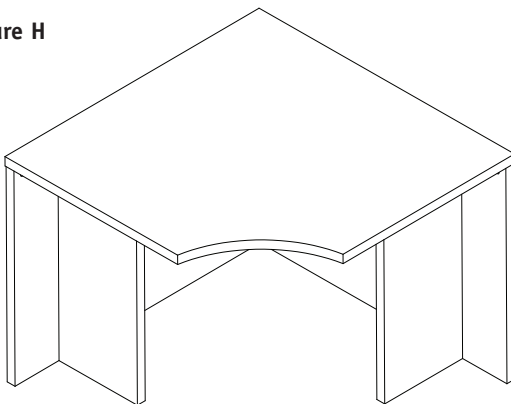
Join modesty panels together and turn the mini-fix cams clockwise to tighten. There should be no gaps between the modesty panel and support panel once assembled (Figure F).

Figure F**6**

To attach modesty/support panels to the worksurface, turn assembly upside down and firmly press onto the dowels and mini-fix studs then turn mini-fix cams clockwise to tighten (Figure G).

Figure G**7**

Carefully turn unit upright (Figure H).

Figure H

Proper product installation, in accordance with these instructions, is the responsibility of the installing agent. If you have any questions concerning these instructions, please call National Customer Care Teams.