

**1** Insert dowels and mini-fix studs into worksurface (Figures A & B).

Figure A

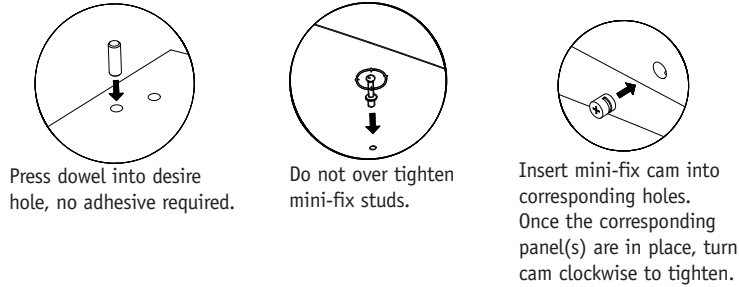
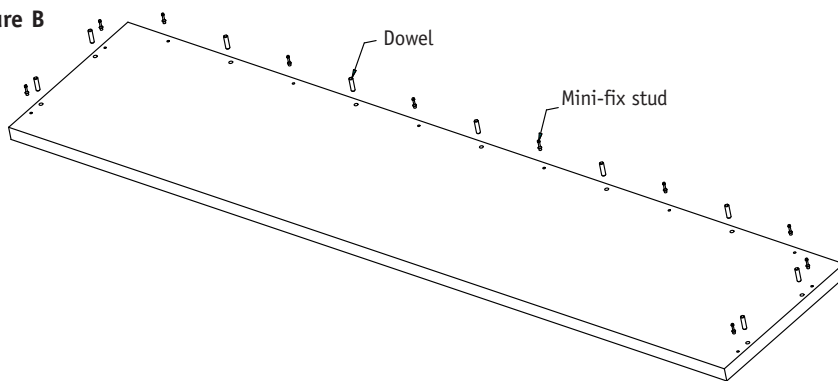
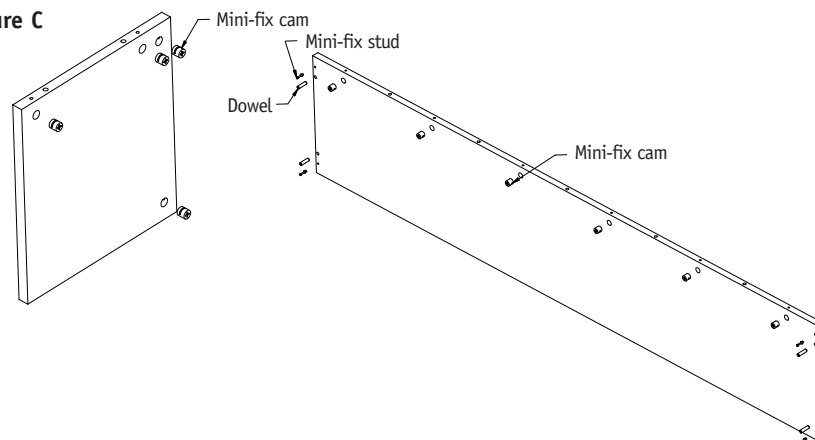


Figure B



**2** Insert dowels, mini-fix cams, and mini-fix studs into the ends of the transaction counter's end panels and modesty panel (Figures A & C).

Figure C



**Recommended Tools**

- Phillips Screwdriver

**Package Contents**

- 5/16" x 1 3/16" Dowels
- Mini-fix Cams
- Mini-fix Studs
- Double Sided Tape

**NATIONAL**

Furniture with Personality®

Telephone 800.482.1717

Fax 812.482.8800

www.nationalonline.com

Part #2034572

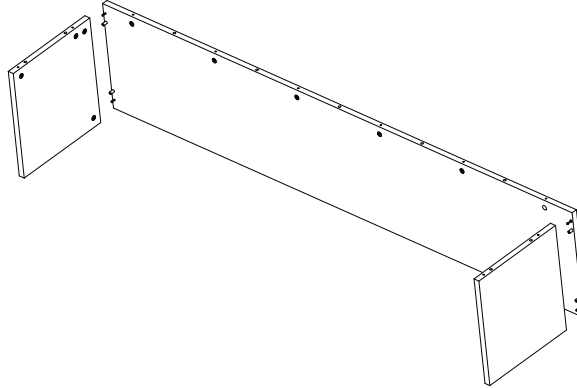
© 2007 Kimball International, Inc.

Proper product installation, in accordance with these instructions, is the responsibility of the installing agent. If you have any questions concerning these instructions, please call National Customer Care Teams.

3

Attach end panels to the modesty panel by turning the mini-fix cams clockwise to tighten (Figure D).

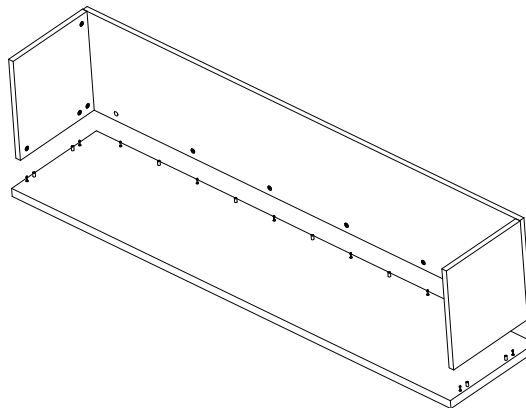
Figure D



4

Attach transaction counter worksurface to the end panel/modesty panel assembly by turning the mini-fix cams clockwise to tighten (Figure E). Once assembled, there should be no gaps between the end/modesty panels and the worksurface.

Figure E

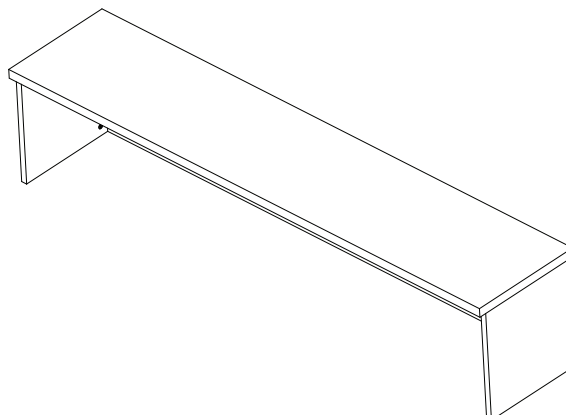


5

Apply double sided tape to the bottom edge of the end panels. Determine the desired location of the counter and press firmly onto the desk surface (Figure F).

**NOTE:** The tape is a very strong adhesive and bonds instantly to the surface it is applied to.

Figure F



Proper product installation, in accordance with these instructions, is the responsibility of the installing agent. If you have any questions concerning these instructions, please call National Customer Care Teams.