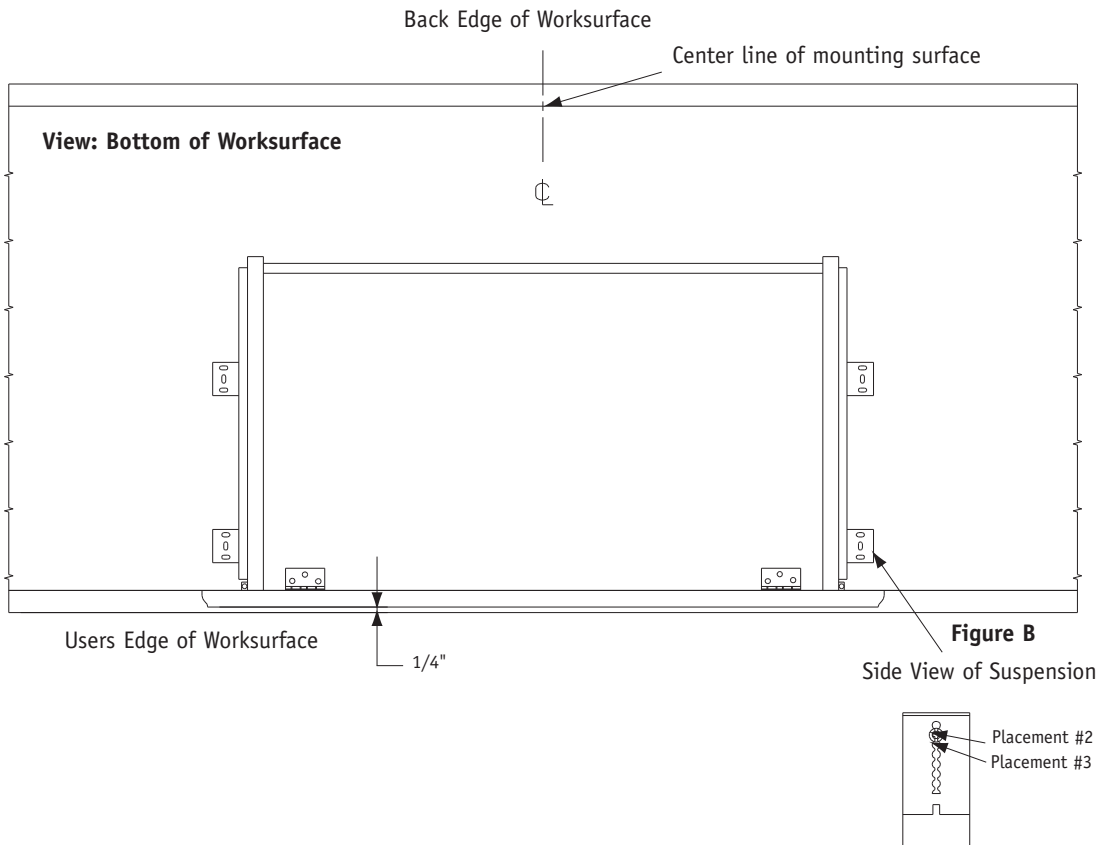


## Assembly Instructions

- 1** Place Drawer in center of worksurface 1/4" back from user edge (Figure A).
- 2** Use (12) #6 x 5/8" screws to attach suspensions to worksurface.
- 3** Reference (Figure B) for Credenzas. Move set screw from placement #2 into placement #3. This will allow Drawer to clear the rim. (This is needed only for Credenzas).

Figure A



### Casegoods

## Roosevelt™ Keyboard Drawer

### Recommended Tools

- Cordless Screwdriver with Phillips bit

Package Contents	Qty.
• #6 x 5/8" Screws	12

**NATIONAL™**

Telephone 800.482.1717  
Fax 812.482.8800  
[www.nationalofficefurniture.com](http://www.nationalofficefurniture.com)

Part #2196467  
Rev

Printed in U.S.A.  
© 2009 Kimball International, Inc.

Proper product installation, in accordance with these instructions, is the responsibility of the installing agent. If you have any questions concerning these instructions, please call National Customer Service.