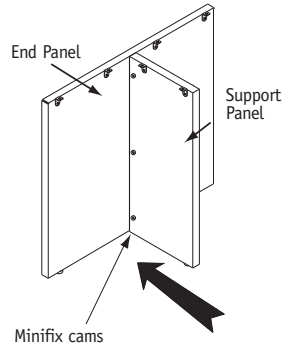


ASSEMBLY INSTRUCTIONS

1

To assemble the T-leg end panel, attach the brackets to the end panel with #8 x 5/8" panhead screws (Figure C). Attach brackets to support panel using the minifix bolts, cams and dowels. (Figure A).

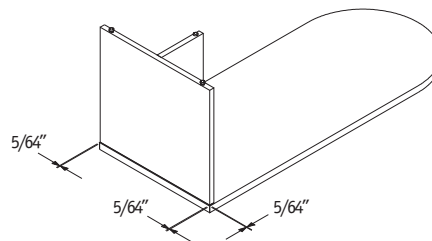
Figure A



2

To install the end panel, place worksurface on a clean, soft surface with the underside facing up. The end panel should be located with a margin of 5/64" around the front, side, and back (Figure B).

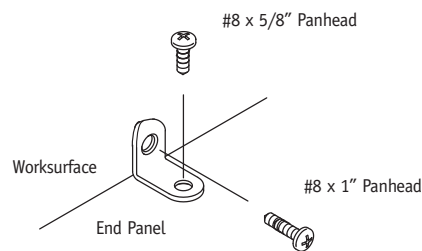
Figure B



3

Attach brackets to end panel using #8 x 5/8" Panhead screw. Attach brackets to worksurface using #8 x 1" Panhead screw (Figure C).

Figure C



WaveWorks® End Panel (T-Leg)

Recommended Tools

- Tape Measure
- #2 Phillips Head Bit
- Screw Gun
- Level

Package Contents

- #8 x 5/8" Panhead Screws
- #8 x 1" Panhead Screws
- L Brackets

NATIONAL

Furniture with Personality®

Telephone 800.482.1717
Fax 812.482.8800
www.nationalonline.com

Part # 2048361

Printed in U.S.A.
© 2008 Kimball International, Inc.

Proper product installation, in accordance with these instructions, is the responsibility of the installing agent. If you have any questions concerning these instructions, please call National Customer Service.