

Speedway

Click Here

for Current
Inventory
Availability
of Deleted
Colors.



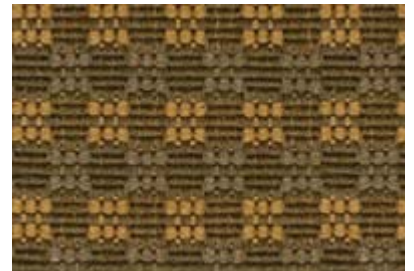
10179 Winnings
Announced for Deletion



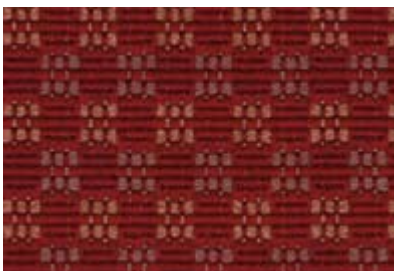
10190 Winner's Circle



10120 Trophy



10137 Victory Lap



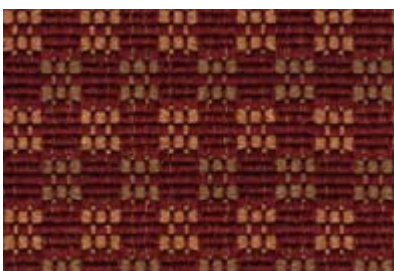
10105 Pace Car



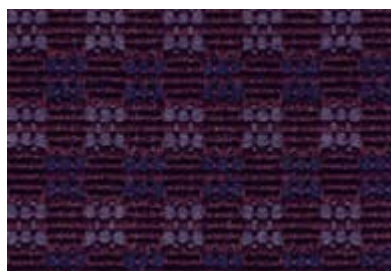
10150 Finish Line



10140 Infield



10175 Start Your Engines



10195 Pole Position



10110 Checkered Flag

Speedway

Seating Fabric Grade 1

Specifications

Pattern #	10100
Contents	52% Polypropylene, 48% Polyester
Width	54"
Repeat	.375 in./Horizontal .50 in./Vertical
Construction	126 +/- 4 ends/in. 40 +/- 2 picks/in.
Weight	11.5 oz./lin. yd.
Backing	SBR Latex
Finish	Blockaide™

Statement of Line

10105	Pace Car
10110	Checkered Flag
10120	Trophy
10137	Victory Lap
10140	Infield
10150	Finish Line
10175	Start Your Engines
10179	Winnings Announced for Deletion
10190	Winner's Circle
10195	Pole Position

Performance



Abrasion	Exceeds 45,000 Double Rubs, Wyzenbeek
Light Fastness	Class 4/40 hrs. min. (AATCC 16A)
Color Fastness	Class 3 (AATCC 8) Wet Class 4 (AATCC 8) Dry
Physical Properties	Class 4 (ASTM D3511) Brush Pill 150 lbs. Warp (ASTM D3597-D5034) Breaking Strength 150 lbs. Fill (ASTM D3597-D5034) Breaking Strength 60 lbs. Warp (ASTM D3597-D4034) Seam Slippage 50 lbs. Fill (ASTM D3597-D4034) Seam Slippage

Flammability



Passes	California Tech. Bulletin #117 Section E (CS-191-53) UFAC Class 1 or A NFPA 260
--------	---

Care

Cleanability	W - Water based cleaners may be used.
--------------	---------------------------------------

NATIONAL

Furniture with Personality®

www.NationalOfficeFurniture.com

1205 Kimball Boulevard Jasper, IN 47549
800.482.1717, Fax 812.482.8800
©Kimball International, Inc. 2002
Printed in the USA,
Form No. NSCSPE Ver. 09
A Unit of Kimball International

Due to variations in the configuration, setting, and calibration of various output devices, the digital image colors shown here may vary from actual samples.