

# NATIONAL

Furniture with Personality®

## Tranquility

Seating Fabric  
Grade 2



21341 Subtle



21334 Hush



21305 Flax



21361 Meadow



21386 Sonatas



21325 Poetry



21354 Whisper



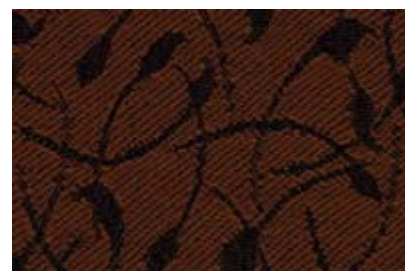
21302 Crackling Fire



21357 Bath



21398 Wisteria



21379 Shadow

Available on Quick Delivery  
Refer to back of card for specifications

# Tranquility

## Seating Fabric Grade 2

### Specifications

Pattern #	21300
Contents	100% Pre-Consumer Polyester
Width	54"
Repeat	3.375 in./Horizontal 2.4375 in./Vertical
Construction	126 +/- 4 ends/in. 59 +/- 2 picks/in.
Weight	10.4 oz./lin. yd.
Backing	SBR Latex
Finish	Blockaide™

### Performance



Abrasion	Exceeds 50,000 Double Rubs, Wyzenbeek
Light Fastness	Class 4/40 hrs. min. (AATCC 16A)
Color Fastness	Class 3 (AATCC 8) Wet Class 4 (AATCC 8) Dry
Physical Properties	Class 4 (ASTM D3511) Brush Pill 150 lbs. Warp (ASTM D3597-D5034) Breaking Strength 120 lbs. Fill (ASTM D3597-D5034) Breaking Strength 75 lbs. Warp (ASTM D3597-D4034) Seam Slippage 65 lbs. Fill (ASTM D3597-D4034) Seam Slippage

### Flammability



Passes	California Tech. Bulletin #117 Section E (CS-191-53) UFAC Class 1 or A NFPA 260
--------	---

### Care

Cleanability	W - Water based cleaners may be used.
--------------	---------------------------------------

### Statement of Line

21302	Crackling Fire
21305	Flax
21325	Poetry
21334	Hush
21341	Subtle
21354	Whisper
21357	Bath
21361	Meadow
21379	Shadow
21386	Sonatas
21398	Wisteria

Please reference price list for product applications. Product details and other data are subject to change without notice.

We will always ship a satisfactory commercial color match. Due to industry standard dye lot variation, colors may not match exactly. Cut yardage and individual memo samples are available. Contact National Customer Service for pricing and availability.

# NATIONAL

Furniture with Personality®

[www.NationalOfficeFurniture.com](http://www.NationalOfficeFurniture.com)

1205 Kimball Boulevard Jasper, IN 47549  
800.482.1717, Fax 812.482.8800  
©Kimball International, Inc. 2002  
Printed in the USA,  
Form No. NSCTRA Ver. 06  
A Unit of Kimball International

Due to variations in the configuration, setting, and calibration of various output devices, the digital image colors shown here may vary from actual samples.