

NATIONAL

Furniture with Personality®

Seating Fabric
Grade 2

Twilight



23105 Goldrush



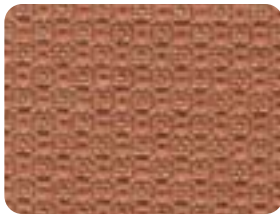
23120 Nude



23109 Barley



23112 Chartreuse



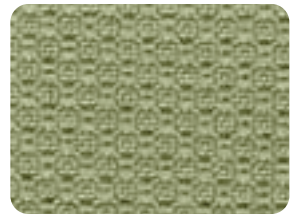
23119 Tangerine



23102 Teal



23101 Ocean



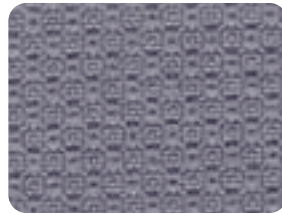
23115 Fresh



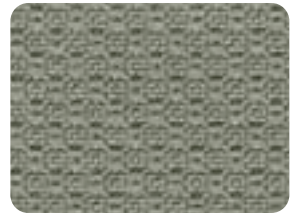
23108 Rust



23118 Gingerbread



23104 Gaze



23114 Willow



23106 Saucy



23111 Bronze



23103 Nightshadow



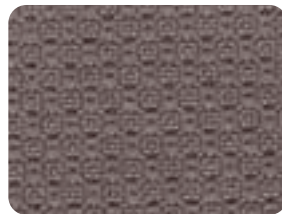
23113 Luxe



23107 Aristocrat



23110 Espresso




23117 Vapor



23116 Cinder

Available on Quick Ship

 = Essentials Collection

Refer to back of card for specifications

Twilight

Seating Fabric Grade 2

Specifications

Pattern #	23100
Content	100% Pre-Consumer Recycled Polyester Terratex
Width	54"
Repeat	None
Construction	80 ends/in. 67 picks/in.
Weight	11.2 oz./lin. yd.
Backing	None
Finish	BLOCKaide™

Performance



Abrasion	Exceeds 50,000 Double Rubs, Wyzenbeek
Light Fastness	Class 4/40 hrs. min. (AATCC 16 Option 3)
Color Fastness	Class 3 (AATCC 8) Wet Class 4 (AATCC 8) Dry
Physical Properties	Class 4 (ASTM D3511) Brush Pill 10 lbs. Warp (ASTM D2261) Tear Strength 10 lbs. Fill (ASTM D2261) Tear Strength 200 lbs. Warp (ASTM D5034) Breaking Strength 200 lbs. Fill (ASTM D5034) Breaking Strength 70 lbs. Warp (ASTM D4034) Seam Slippage 70 lbs. Fill (ASTM D4034) Seam Slippage

Flammability



Passes	California Tech. Bulletin #117 Section E (CS-191-53) UFAC Class 1 NFPA 260 Class 1
--------	------------------------------------------------------------------------------------------

Care

Cleanability	WS - Water or solvent based cleaners may be used.
--------------	---------------------------------------------------

Statement of Line

23101	Ocean
23102	Teal
23103	Nightshadow
23104	Gaze
23105	Goldrush
23106	Saucy
23107	Aristocrat
23108	Rust
23109	Barley
23110	Espresso
23111	Bronze
23112	Chartreuse
23113	Luxe
23114	Willow
23115	Fresh
23116	Cinder
23117	Vapor
23118	Gingerbread
23119	Tangerine
23120	Nude



100% OF THE ELECTRICITY USED TO MAKE THIS PRODUCT IS MATCHED BY GREEN-E CERTIFIED RENEWABLE ENERGY CERTIFICATES (www.green-e.org)



Terratex

Terratex is a registered trademark of Interface Fabrics Group. Each Terratex fabric must meet these four criteria:

- made of 100% post-consumer and/or post-industrial fiber, or compostable material
- made using processes that reduce waste, emissions, energy, water usage, and toxic by-products
- meets or exceeds the same quality standards of fabrics manufactured using virgin materials and conventional processes
- made of a single fiber type, without backcoating, so that it too can be recycled or composted

NATIONAL

Furniture with Personality®

www.NationalOfficeFurniture.com

1205 Kimball Boulevard Jasper, IN 47549
800.482.1717, Fax 812.482.8800
©Kimball International, Inc. 2006
Printed in the USA,
Form No. NSCTWI
A Unit of Kimball International

Due to variations in the configuration, setting, and calibration of various output devices, the digital image colors shown here may vary from actual samples.