

# NATIONAL

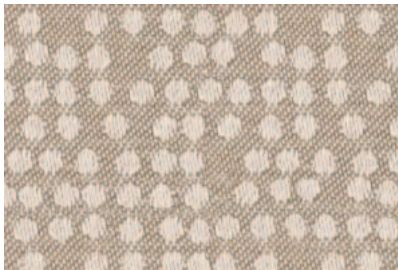
Furniture with Personality®

## Shenanigans

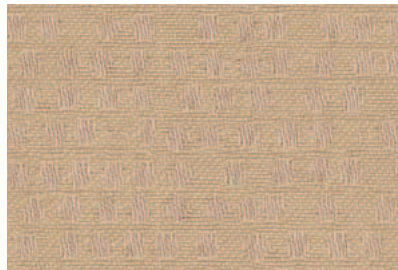
Seating Fabric  
Grade 2



20301 Antics



20300 Gimmick



20317 Monkey Shine



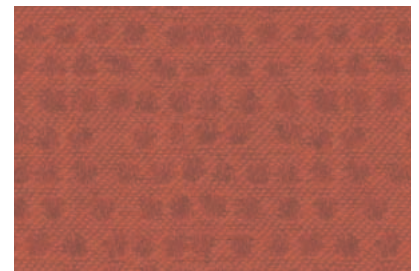
20399 Mischievous



20380 Tom Foolery



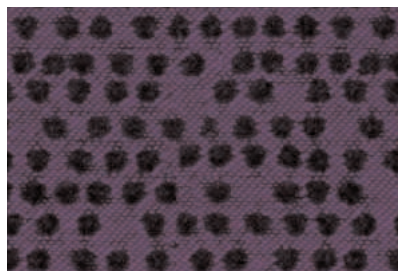
20364 Stunt



20373 Ruse



20352 Lark



20360 Maneuver



20389 Frolic



20322 Caper



20344 Wile

Due to variations in the configuration, setting, and calibration of various output devices, the digital image colors shown here may vary from actual samples.

# Shenanigans

## Seating Fabric Grade 2

### Specifications

Pattern #	20300
Contents	67% Recycled Polyester, 33% Nylon
Width	54"
Repeat	4.5 in./Horizontal 4.5 in./Vertical
Construction	130.5 ends/in. 58 picks/in.
Weight	9.3 oz./lin. yd.
Backing	Latex
Finish	Blockaide™

### Performance



Abrasion	Exceeds 50,000 Double Rubs, Wyzenbeek
Light Fastness	Class 5/60 hrs. min. (AATCC 16A)
Color Fastness	Class 4-5 (AATCC 8) Wet Class 4-5 (AATCC 8) Dry
Physical Properties	Class 4 (ASTM D3511) Brush Pill 250 lbs. Warp (ASTM D3597-D5034) Breaking Strength 130 lbs. Fill (ASTM D3597-D5034) Breaking Strength 55 lbs. Warp (ASTM D3597-D4034) Seam Slippage 55 lbs. Fill (ASTM D3597-D4034) Seam Slippage

### Flammability



Passes	California Tech. Bulletin #117 Section E (CS-191-53) UFAC Class 1 or A BIFMA Standard F-1-1978 Class 1
--------	--

### Care

Cleanability	WS - Water or solvent based cleaners may be used.
--------------	---

Please reference price list for product applications. Product details and other data are subject to change without notice.

We will always ship a satisfactory commercial color match. Due to industry standard dye lot variation, colors may not match exactly. Cut yardage and individual memo samples are available. Contact National Customer Service for pricing and availability.

### Statement of Line

20300	Gimmick
20301	Antics
20317	Monkey Shine
20322	Caper
20344	Wile
20352	Lark
20360	Maneuver
20364	Stunt
20373	Ruse
20380	Tom Foolery
20389	Frolic
20399	Mischievous

# NATIONAL

Furniture with Personality®

1205 Kimball Boulevard Jasper, IN 47549  
800.482.1717, Fax 812.482.8800  
www.nationalonline.com

©Kimball International, Inc. 2002  
Printed in the USA, Form No. NSCSHE Ver. 03

A Unit of Kimball International