

# CHRISTUS Health

Case Study



## The Challenge

The Information Management Department of CHRISTUS Health is the communications center of a top-ten Catholic health system serving a large number of hospitals and health facilities in six U.S. states and Mexico.

Existing furnishings, made in the 1950s and 1960s, were ill suited to the department's processes and workflow. In addition, managers believed an eventual physical relocation of their department was likely. They needed an ergonomic, modular solution within a defined budget.

"We wanted furnishings that could be moved around if need be... the ergonomic factor was huge in our choice as well. Since most of us spend virtually all day working at computers, we wanted chairs and desktops that provide comfort and support," states Hank Wahrmond, IM/App. Analyst & AV Support.

## The Design Plan

The design plan followed interior design schemes in use by CHRISTUS Health, employing paint choices and materials compatible with corporate preferences. A modest, inflexible budget made cost a significant factor in every design and purchase decision throughout the project.

## The Furnishings

National's WaveWorks and EnvyWorks casegoods with laminate finishes in two color choices brought the desired efficiency. In addition to flexible configurations and ample storage for current needs, these modular furnishings allow the department to adapt readily if expansion or relocation becomes necessary.

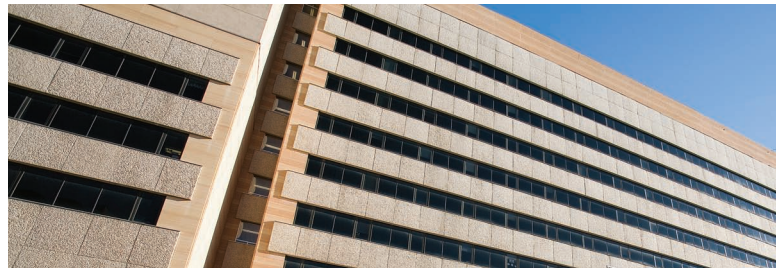
The comfortable contours of Gotcha fully adjustable task seating completed the ergonomic solution. Remedy and Timberlane upholstered guest chairs with arms answered the call for attractive occasional seating in character with the entire design scheme.

## The Results

National Office Furniture provided quality options that enabled CHRISTUS Health to complete a critical renovation of its Information Management Department. National employees feel privileged to have served CHRISTUS Health and to help it continue a tradition of care and healing for people in the Southwest.

**"The furnishings were well-received...The modular units have the keyboard trays that can be mounted under the desk and moved up for use."**

**- Hank Wahrmond**



## Location

CHRISTUS Health  
Information Management Department  
Dallas, TX

## Products

EnvyWorks® Casegoods  
WaveWorks® Casegoods  
Gotcha™ Seating  
Remedy® Seating  
Timberlane™ Seating